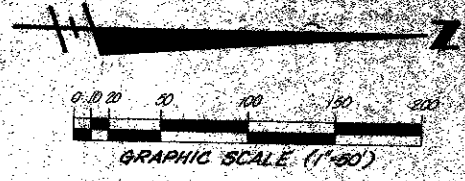


44/28

THIS INSTRUMENT PREPARED UNDER THE
DIRECTION OF JOHN H. FITSCHEN
GRAVEN THOMPSON & ASSOCIATES, INC.
LAND SURVEYORS - CIVIL ENGINEERS
3974 OKEECHOBEE BOULEVARD,
WEST PALM BEACH, FLORIDA

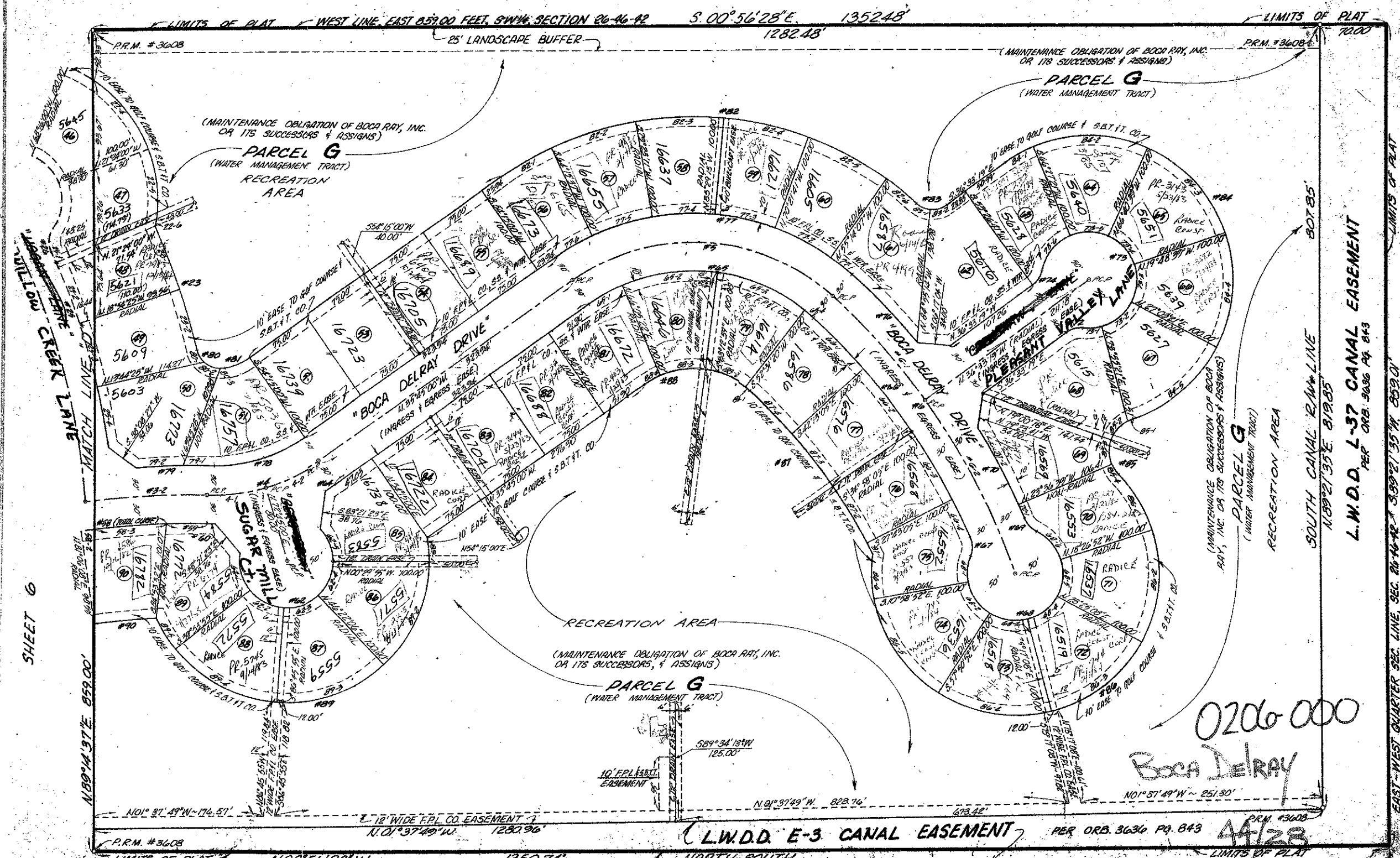
BOCA DELRAY

A P.U.D.
A PORTION OF SECTION 26, TOWNSHIP 46
SOUTH, RANGE 42 EAST, PALM BEACH
COUNTY, FLORIDA.



28

ACREAGE (NOT PLATTED)



SHEET 6

ACREAGE (NOT PLATTED)

0206 000
Boca Delray

L.W.D.D. E-3 CANAL EASEMENT PER ORB. 3636 Pg. 843

ACREAGE (NOT PLATTED)

